

**The Oriental Insurance Company Ltd.
A-25/27,Asaf Ali Road,,
New Delhi -110002**

TENDER DOCUMENTS

**NAME OF WORK: COMPLETION OF BALANCE WORKS OF
RESIDENTIAL BUILDING**

AT

**PLOT No. E - 409, Greater Kailash-II , New Delhi
Owned by The ORIENTAL INSURANCE COMPANY LTD.**

PART – II: FINANCIAL BID

VASTU MANDAL
ARCHITECTS AND INTERIOR DESIGNERS
F328, III FLOOR, LADO SARAI,
NEW DELHI-110030
PH.- 41665455
vastumandal@gmail.com

PART- II - PRICE BID (FINANCIAL BID)
SECTION V
BILL OF QUANTITIES AND PRICES

(A) CIVIL WORKS

S.No	Description of Item	Unit	Quantity	Rates (Rs)	Rates (Words)	Amount (Rs)
------	---------------------	------	----------	--------------	-----------------	-------------

Note :-

Where ever basic prices are given they shall be inclusive of all taxes
Rates are for working at all heights unless otherwise mentioned

SECTION A BRICK WORK

- 1 Half brick masonry with FPS bricks of class designation 75 in the superstructure above plinth upto floor V Level in cement mortar 1:4 (1cement :4 Coarse sand)

Sq m 10

- 2 Extra for providing and placing in position 2 Nos. 6 mm dia M. S. bars at every third course of half brick masonry (with F. P. S. bricks)

Sq m 10

SUBTOTAL-A CARRIED OVER TO SUMMARY OF CIVIL WORKS

SECTION-B WOODWORK /STEEL - STRUCTURAL STEEL / ALUMINIUM/ UPVC WORKS

- 1 Providing wood work in frames of doors, windows, clerestory windows , Handrails and other frames, wrought framed and fixed in position

a Second class teak wood **cum** 0.5

b Extra on above for wood work in door , window glazed /panelled shutter stiles, frames etc **cum** 0.25

S.No	Description of Item	Unit	Quantity	Rates (Rs)	Rates (Words)	Amount (Rs)
2	Providing and fixing 40 mm thick wood glazed door shutter having 150 wide styles, top rail & 200 mm wide bottom rail and glazed with 6 mm thick clear float glass panel fixed with 18 x 18 mm wood beading in the following wood : Rate is inclusive of melamine spray polish The doors will have best quality 4 Nos 4" long SS hinges, SS finished double legged foot operated door stays, Polyvinyl door stopper fixed to skirting, SS finish tubular handle & mortice lock of Dorset make- model SDORSS(SS finish) with Rose and Handle seperate. This will have provision for Al.air transfer Grill as per dwg.Size : upto 1000 x 2400.					
a	Using Beech wood	Nos	2			
b	Extra no above for First Class Teak Wood in lieu of Beech Wood	Nos	2			
3	Providing / Fixing Flush door with hard wood frame 100x50 all around 40 mm thick solid case shutter , as per drawing and 1/4" thk. painted hard wood lipping all around the shutter. The doors will have best quality 4 Nos 4" long SS hinges, SS finished double legged foot operated door stays, Polyvinyl door stopper fixed to skirting.					
a	.Size : upto 950 x 2200.	Nos.	2			
b	.Size : upto 750 x 2200.	Nos.	2			
4	Providing and fixing upto 4mm thick decorative vineer laid in approved pattern on existing door shutters complete in all respect					
a	Natural Teak (century/equivalent approved)	Sqm	5			
5	Providing and fixing 1mm thick premium range laminate in plain or wood grains shades laid in approved pattern on existing door shutters complete in all respect as per directions and approval (Sunmica /equivalent approved)					
		Sqm	25			
6	Providing and fixing wooden moulded beading to door and window frames with iron screws, plugs and priming coat on unexposed surface etc. complete :					
a)	2nd class teak wood					
(i)	50x12 mm	Rm	50			

S.No	Description of Item	Unit	Quantity	Rates (Rs)	Rates (Words)	Amount (Rs)
7	Providing & fixing glass panes with putty and glazing clips in steel /upvc doors, windows, clerestory windows all complete with (Area of opening for glass panes excluding portion inside rebate shall be measured):					
a	5.5 mm thick toughened glass panes.	Sqm	12			
b	8 mm thick glass panes.	Sqm	20			
c	Extra on toughening the 8mm Glass and fixed to ss railings .Glass shall have grinded & clear edge polishing .The cost of making holes to be taken seperately					
		Sqm	20			
8	P/F low ht.under counter storage unit for Kitchen upto 600 deep in 19mm thk.19mm thk. water proof board construction with 6mm thk. water proof Ply backing. The vertical divisions shall be as per the drawing/details at spacing with 19mm board not more than 450 mm. All internal surface of storage counter shall be in 1mm thick white Lamiate finish .All edges will finished with upto 4mm thk TW margin and polished /enamel paint with matching paint. All the shutters shall be made in 25 mm rubber wood board (Basic price Rs 1400 Sqm) with auto closing hinges (hetich equivalent make) and upto 4 mm thk margins polished in matching shade. All shutters shall have tubular Kich make CHR104C equivalent approved make handles and these shall be fixed with auto closing hinges. (The shutter will include fixing with automatic hinges of Hettich make)	Sqm.	8			
9	P/F over counter storage unit upto 300mm depth and 700mm high made out of 19 mm BWR ply for verticals, top, bottom, and intermediate vertical partitions @600 c/c or part thereof and backing of 6 mm th. BWR ply. The inside ,top & exposed sides of storage to be finished with 1mm thick laminate and complete in all respects as per design.	Sqm.	8			
	Shutters shall be in 19 mm BWP grade block board with Upto 300 mm deep					
10	Providing and fixing following stainless steel kitchen over the counter /under the counter accessories of Kaff make or other equivalent approved brand including necessary channels, screw etc complete in all respect					

S.No	Description of Item	Unit	Quantity	Rates (Rs)	Rates (Words)	Amount (Rs)
a	Dish rack with drip tray K1/OS 601ss or equivalent as approved	Nos	4			
b	Pipe with fittings K1 OS 602	Nos	9			
11	Providing and fixing bright finished brass tower bolts (barrel type) with necessary screws etc. complete :					
a	250x10 mm	each	20			
b	150x10 mm	each	20			
c	100x10 mm	each	20			
12	Providing and Fixing following types of of Dorset equivalent approved handles /locks etc system complete in all respect					
a	Cylinder lock Euro Profile model no CL-206 with mortice lock model No ML100 and a pair of lever handles (NIKA) NKORSS (SS finish) with Rose	each	4			
b	Cylinder lock Euro Profile model no CL-207 with mortice lock model No ML100 and a pair of lever handles (NIKA) NKORSS (SS finish) with Rose	each	8			
c	Door Chain	each	4			
d	Eve view model -ME	each	4			
e	Pull Handle pair -NIKA model NK10 PRSG	each	8			
f	Double attachment model no DDML including providing /fixing for mortice lock and dead lock for double door	each	4			
13	Steel work welded in built up sections/framed work including cutting,hoisting,fixing in position and applying a priming coat of approved steel primer using structural steel etc. as required :					
a	In gratings ,frames, guard bar,ladders,railings brackets,gates & similar works	Kg	400			
14	Structural steel work in single section ,fixed with or without connecting plate including cutting ,hoisting, fixing in position and applying a priming coat of approved steel primer all complete.	Kg.	100			

S.No	Description of Item	Unit	Quantity	Rates (Rs)	Rates (Words)	Amount (Rs)
15	Providing and fixing stainless steel(Grade- 304) railing /gates etc made of hollow tubes, channels, plates etc. including welding, grinding, buffing, polishing and making curvature(wherever required) and fitting the same with necessary stainless steel nuts and bolts complete, i.e. fixing the railing /gates with necessary accessories & stainless steel dash fasteners, stainless steel bolts etc, of required size, on the top of the floor or the side of waist slab with suitable arrangement as per the approval of Engineer- incharge, (For payment purpose only weight of stainless steel members shall be considered excluding fixing accessories such as nuts, bolts, fasteners etc.)	Kg	50			
16	Providing and fixing expansion hold fasteners on C.C./R.C.C/Brick masonry surface backing including drilling necessary holes and the cost of bolt etc. complete :					
a	Fastener with threaded dia. 10mm.	Nos	10			
17	Making holes in the glass as per drawings	each	64			
18	Providing and fixing SS 304 grade Glass Holders (Ozone model OZRF-GH-01-00-00/ equivalent approved) to the the SS railing /gates etc	each	124			
19	Filling the gap in between aluminium frame & adjacent RCC/ Brick/ Stone work by providing weather silicon sealant over backer rod of approved quality as per architectural drawings and direction of Engineer-in- Charge	Rm	100			
SUBTOTAL-B CARRIED OVER TO SUMMARY OF CIVIL WORKS						

SECTION-C (FALSE CEILINGS)

1	Providing and fixing at all height false ceiling of 12.5 mm thickness tapered edge gypsum board conforming to IS :2095 including providing and fixing of frame work made of help of rawl plugs at 450mm centre to centre with 25mm 12.5 mm thick tapered edge gypsum moisture resistant board	sqm	5			
---	---	-----	---	--	--	--

S.No	Description of Item	Unit	Quantity	Rates (Rs)	Rates (Words)	Amount (Rs)
2	Providing and fixing false ceiling as per 1 above but in lieu of Gypsum board providing and laying in situ P.O.P. with	Sqm	5			
3	Providing and fixing 75 high Gypsum board vertical band on the edges of False Ceiling	Rm	5			
4	Providing and fixing Double Layer Ceiling System , using 12mm thick commercial ply in lieu of Gypboard ceiling in item 1 as first layer & using 4 mm thk vineer in approved pattern as second layer fixed to each other as per drawing and specifications Vineer basic Price Rs 200/- Sft.	sqm	5			

SUBTOTAL-C CARRIED OVER TO SUMMARY OF CIVIL WORKS

SECTION-D FLOORING / WALL CLADDING/ STONE WORK

1	Providing and laying machine cut, mirror polished, Italian Marble stone flooring laid in required pattern in linear portion of the building all complete as per architectural drawings, with 18 mm thick stone slab laid over 20 mm (average) thick base of cement mortar 1:4 (1 cement : 4 coarse sand) laid and jointed with white cement slurry @ 4.4 kg/sqm including pointing with white cement slurry admixed with pigment to match the marble shade including rubbing, curing and polishing etc. all complete as specified and as directed by the Engineer-in-Charge. (stone upto Rs 4700/- Sqm)					
a	18 mm thick Italian Marble stone slab, Perlato, Rosso verona, Fire Red or Dark Emplaadore etc.	Sqm	5			
2	Polishing the existing Italian marble Floor in mirror polish finish	Sqm	125			
3	Kota stone slab flooring over 20 mm (average) thick base laid over and jointed with grey cement slurry mixed with pigment to match the shade of slab including rubbing and polishing complete with:					
a	25 mm thick with base 1:4 (1 cement:4 Coarse sand)	Sq m	15			

S.No	Description of Item	Unit	Quantity	Rates (Rs)	Rates (Words)	Amount (Rs)
4	Providing and fixing 18 mm thick mirror polished,premolded, prepolished machine cut for kitchen platforms , vanity counters facias and similar locations of required size of approved shade , colour and texture laid over 20 mm thick base cement mortar 1 : 4 (1 cement : 4 coarse sand) with joints trated with white cement , mixed with matching pigment , epoxy touch ups , including rubbing , curing molding and polishing to edge to give high gloss finish etc complete					
a	Granite of any colour and shade (Basic price of stone upto Rs 1850/- per Sq.M.)					
i	all levels : upto 0.50 sqm slab area	Sq m	6			
ii	all levels : above 0.50 sqm slab area	Sq m	2			
5	Extra for fixing marble / granite stone, over and above corresponding basic item, in facia and drops of width upto 150 mm with epoxy resin based adhesive, including cleaning etc. complete.	metre	25			
6	Extra for providing opening of required size & shape for wash basin/kitchen sink in kitchen platform, vanity counter and similar location in marble/Granite/stone work, including necessary holes for pillar taps etc. including moulding, rubbing and polishing of cut edges etc. complete.					
		each	20			
7	Providing and fixing 20 mm thick mirror polished , machine cut granite of required size of approved shade , colour and texture laid over 20 mm thick base cement mortar 1 : 4 (1 cement : 4 coarse sand) with joints treated with white cement , mixed with matching pigment , epoxy touch ups , including rubbing , curing etc. complete at all levels : upto 1.5 sqm slab area (Basic price of stone upto Rs 1650/- per Sq.M.)					
a	Granite Flooring	Sq m	15			

S.No	Description of Item	Unit	Quantity	Rates (Rs)	Rates (Words)	Amount (Rs)
	8 Extra for providing edge moulding to 20 mm thick granite stone as / approval , counters , vanities , steps etc. over item no. 10 including machine polishing to edge to give high gloss finish etc. complete as per approved design					
a	Granite work	Metre	15			
	9 Providing and fixing cramps of required size & shape in RCC / including drilling necessary hole in stones and embedding the cramp in the hole (Fastener to be paid separately)					
	Stainless steel cramps	Kg.	2			
SUBTOTAL- D CARRIED OVER TO SUMMARY OF CIVIL WORKS						

SECTION -E FINISHING

Rates of external plaster are for height upto 10m from ground level unless otherwise specified

	1 12 mm cement plaster of mix: 1:4(1cement:4 fine sand)					
		Sq m	35			
	2 15 mm cement plaster on rough side of single or half brick wall of mix: 1:4(1cement:4 fine sand)					
a		Sq m	35			
	3 15 mm cement plaster on the rough side of single or half brick wall of mix : 1 : 4 (1 cement : 4coarse sand)					
		Sq m	35			
	4 6 mm cement plaster to ceiling of mix 1 : 3 (1 cement : 3 fine sand)					
		Sq m	10			
	5 Extra for plastering exterior walls of height more than 10 m from ground level for every additional height of 3 m or part thereof.					
		sqm	15			

S.No	Description of Item	Unit	Quantity	Rates (Rs)	Rates (Words)	Amount (Rs)
6	Repairs to plaster of thickness 12mm to 20mm in patches of area 2.5 sq. meters and under including cutting the patch in proper shape, raking out joints and preparing and plastering the surface of the walls complete including disposal of rubbish to the dumping ground within 50metres lead : With cement mortar 1:4 (1cement: 4 coarse sand).	Sqm	50			
7	Providing and applying plaster of paris putty of upto 4 mm thickness over plastered surface to prepare the surface even and smooth complete.	sqm	75			
8	Wall painting with plastic emulsion paint of approved brand and manufacture to give an even shade:					
8.1	Two or more coats on new work	sqm	25			
8.2a	Extra on 7.1 but with Asian Royale plastic emulsion paint in approved shade other than metallic shade on walls .	sqm	25			
b	Two or more coats on existing paint	sqm	2750			
9	Painting with synthetic enamel paint of approved brand and manufacture of required colour to give an even shade					
a	Two or more coats on new work over an under coat of suitable shade with ordinary paint/primer of approved brand and manufacture	Sq m	10			
b	Two or more coats on existing paint	Sq m	150			
10	French spirit polishing :					
a	Two or more coats on new works including a coat of wood filler	Sq m	25			
b	Two or more coats on existing polish	Sq m	150			
11	Applying putty (Birla/ J.K.) on undecorated wall including preparing the surface by thoroughly cleaning grease, dirt dust and other foreign matter including carriage of materials in all leads and lifts and heights.	Sqmt.	15			
11	Finishing walls with premium Acrylic Smooth exterior paint with silicone additives of required shade					

S.No	Description of Item	Unit	Quantity	Rates (Rs)	Rates (Words)	Amount (Rs)
a	New work (Two or more coats applied @1.43 ltr/10sqm.over and including base coat of water proofing cement paint applied @ 2.20 kg/ 10 sqm). (Asian Ultima or equivalent approved)	sqm	25			
b	Two or more coats on existing paint	sqm	150			
12a	Finishing walls with textured paint of required shade : New work involving base coat of Asian paints exterior primer ,second coat of Apex Duratex Fine Tex applied with roller to give finetex ripples effect and top coat of Apex Ultima in approved shade (Complete in all respect as per Asian Paints specifications).	Sqm.	10			
b	Two or more coats as above on existing paint	Sqm	750			
SUBTOTAL- E CARRIED OVER TO SUMMARY OF CIVIL WORKS						
SECTION -F EXTERNAL DEVELOPMENT						
1	Providing and fixing 60mm thick factory made cement concreteinterlocking paver block of M30 Grade made by block making machine with strong vibratory compaction and of approved size and design /shape laid in required colour and pattern over and including 50mm thick compacted bed course sand, filling the joints with coarse sand etc.all complete as per the direction	Sq m	15			
SUBTOTAL-F CARRIED OVER TO SUMMARY OF CIVIL WORKS						

SUMMARY OF CIVIL WORKS

S.No.	Section	Description	Amount (Rs)
1	SECTION A	BRICK WORK	
2	SECTION-B	WOODWORK /STEEL - STRUCTURAL STEEL / ALUMINIUM/ UPVC WORKS	
3	SECTION-C	FALSE CEILINGS	
4	SECTION-D	FLOORING / WALL CLADDING/ STONE WORK	
5	SECTION -E	FINISHING	
6	SECTION -F	EXTERNAL DEVELOPMENT	
		TOTAL OF CIVIL WORKS CARRIED OVER TO GRAND SUMMARY	

(B) SCHEDULE OF QUANTITIES PLUMBING AND SANITARY WORKS

S.NO.	DESCRIPTION OF ITEMS	UNIT	Qty	Rate (Rs)	Rate Words	Amount (Rs)
-------	----------------------	------	-----	-------------	------------	---------------

SUB HEAD I - SANITARY FIXTURE & FITTINGS

- 1.01 Providing & Fixing white **vitreous china wash basin** for under counter mounting, specially fabricated brackets, painted white, 32mm C.P.waste, connection pipe & rubber adopter for waste connection, complete including cutting and making good the walls, wherever required. **(MODEL NO - 10095 HINDWARE MAKE or approved equivalent)**

Each 12

- 1.02 Providing and fixing wash basin with CI/MS brackets/Fastners, equivalent approved, 32mm CP brass waste of standard pattern, including painting of fittings and brackets, cutting and making good the walls wherever require.**(MODEL NO - 91062 HINDWARE MAKE or approved equivalent)**

Each 2

- 1.03 Providing and fixing stainless steel A ISI 304 (18/8) kitchen sink as per I.S.13983 with C.I. Brackets, stainless steel plug 40mm including painting of fittings and brackets cutting and making good the walls wherever required.

Kitchen sink with drain board
510x1040 mm bowl depth 250mm

Each 4

- 1.04 Providing and fixing PTMT Bottle trap for wash basin, sink & urinal .
Bottle trap 31mm single piece moulded with height of 270mm, effective length of tail pipe 260mm from the centre of the waste coupling 77mm breadth with 25mm minimum water seal, weighing not less than 260gms.

Each 12

- 1.05 Providing and fixing Bottle trap 38mm single piece moulded with height of 270mm, effective length of tail pipe 260mm from the centre of the waste coupling 77mm breadth with 25mm minimum water seal, weighing not less than 263gms.

Each 4

S.NO.	DESCRIPTION OF ITEMS	UNIT	Qty	Rate (Rs)	Rate Words	Amount (Rs)
1.06	Providing and fixing PTMT towel ring with concealed fittings arrangement of approved quality and colour, weighing not less than 88gms.. (MODEL NO - AKP-35721P JAQUAR MAKE or approved equivalent)	Each	12			
1.07	600mm long towel rack with total length of 600mm without lower (Minimum) (MODEL NO - AKP-35781PF JAQUAR MAKE or approved equivalent)	Each	12			
1.08	Providing & fixing C.P brass Long Body bib cock of approved quality and weighing not less than 690gms.. (MODEL NO - CON-107KN JAQUAR MAKE or approved equivalent) 15 mm nominal bore	Each	8			
1.09	Providing & fixing uplasticised PVC connection pipe with brass unions 45 cm length 15 mm nominal bore	Each	68			
1.10	Providing and fixing C.P. brass angle valve 15mm dia for basin mixer and gyser points of approved quality conforming to IS : 8931 . (MODEL NO - CON-05KN JAQUAR MAKE or approved equivalent) 15mm nominal bore	Each	68			
1.11	Providing and fixing toilet paper holder . C.P brass (MODEL NO - AKP 35751P JAQUAR MAKE or approved equivalent)	Each	12			
1.12	Providing & fixing PTMT soap Dish Holder having length of 138 mm ,breadth 102 mm , height of 75 mm with concealed fitting arrangements . Weighing not less than 106 gms.	Each	12			
1.13	Providing and fixing of 15mm OVER HEAD shower with 15 or 20mm inlet: 100 mm diameter (MODEL NO - OHS -1989 JAQUAR MAKE or approved equivalent)	Each	12			

S.NO.	DESCRIPTION OF ITEMS	UNIT	Qty	Rate (Rs)	Rate Words	Amount (Rs)
1.14	Providing and fixing PTMT waste coupling for wash basin and sink, of approved quality and colour. Waste Coupling 31mm dia of 79mm length and 62mm breadth weighing not less than 45gms. Waste Coupling 38mm dia of 83mm length and 77mm breadth weighing not less than 60gms.	Each	12			
		Each	4			
1.15	Providing & fixing PTMT stop cock of approved quality and colour Concealed Stop cock, 15mm nominal bore, 108mm long, weighing not less than 108gms. (MODEL NO - CON -087KN JAQUAR MAKE or approved equivalent)	Each	20			
1.16	Providing & fixing 600 x 450mm beveled edge mirror of superior glass (of approved quality) complete with 6mm thick hard board ground fixed to wooden cleats with C.P. brass screws and washers complete.	Each	12			
1.17	Providing & fixing CP brass Health faucet with PVC Flexible Tube with wall hook. (MODEL NO -ALD-CHR-585 JAQUAR MAKE or approved equivalent)	Each	12			
1.17	Providing & Fixing Bath Spout including all fittings and connections complete as required. (MODEL NO -F280023, JAQUAR MAKE or approved equivalent)	Each	12			
1.18	Providing and Fixing wall mounted single lever sink mixer with swinging spout complete, including cutting and making good the walls wherever required. (MODEL NO - VGP-81173 B JAQUAR MAKE or approved equivalent)	Each	4			
1.19	Providing and Fixing Two way bib cock complete, including cutting and making good the walls wherever required. (MODEL NO - CON-041KN JAQUAR MAKE or approved equivalent)	Each	12			
1.20	Providing & Fixing C.P. wall mount double Robe Hook fixed to wooden cleats with C.P. brass screws. (MODEL NO - CAN-1161N JAQUAR MAKE or approved equivalent)	Each	12			

S.NO.	DESCRIPTION OF ITEMS	UNIT	Qty	Rate (Rs)	Rate Words	Amount (Rs)
1.21	Providing and ixing hot water Geyser 25ltr capacity complete in all respect including cutting and making good the walls wherever required as per approval of engineer in charge.	Each	12			
1.22	Providibng and fixing straight type Macfit single body push fit type WC pan connector with factory supplied spring loaded seal guard of McAlpine, UK with integral single mould sealing fins made of flexible EVA body, including bush/adaptor for use with C.I. Pipe as supplied with the pan connector.	Each	12			
TOTAL OF SUB HEAD I - SANITARY FIXTURES CARRIED OVER TO SUMMARY						

S.NO.	DESCRIPTION OF ITEMS	UNIT	Qty	Rate (Rs)	Rate Words	Amount (Rs)
SUB HEAD II - SOIL, WASTE , VENT WATER PIPES						
2.01	Providing and fixing soil, waste and vent pipes 100mm dia Centrifugally cast (spun) iron socketed pipe as per IS 3989	Metre	30			
2.02	Providing and fixing M.S. holder bat clamps of approved design to sand cast iron/cast iron (spun) pipe embedded in and including cement concrete blocks 10 x 10 x 10 cm of 1:2:4 mix (1 cement : 2 coarse sand : 4 graded stone aggregate 20mm nominal size) including cost of cutting holes and making good the walls etc. For 100mm dia pipe	Each	6			
2.03	Providing and fixing plain bend of required degree. 100mm Centrifugally cast (spun) iron S & S pipe as per IS: 3989	Each	4			
2.07	Providing lead caulked joints to sand cast iron / centrifugally cast (spun) iron pipes and fittings of diameter: 100mm	Each	4			
2.08	Providing and fixing M.S stays and clamps for sand cast iron/centrifugally cast (spun) iron pipes of diameter. 100mm	Each	4			

S.NO.	DESCRIPTION OF ITEMS	UNIT	Qty	Rate (Rs)	Rate Words	Amount (Rs)
2.10	Providing and fixing PTMT grating of approved quality and colour. Circular type 125 mm nominal dia with 25 mm waste hole.	Each	24			
2.11	Providing & fixing GI pipes complete with GI fittings and clamps, including cutting & making good the walls etc.					
a)	32 mm dia	Metre	10			
b)	40 mm dia	Metre	2			
c)	50 mm dia	Metre	10			
2.12	Painting GI pipes and fittings with two coats of anti corrosive bitumestic paint of approved quality.					
a)	32mm dia nominal bore	Metre	10			
b)	40mm dia nominal bore	Metre	2			
c)	50mm dia nominal bore	Metre	10			
2.13	Painting sand cast iron / centrifugally cast (spun) iron soil,waste vent pipes and fittings with paint of any colour such as chocolate grey ,or buff etc .over a coat of primer (of approved quality) for new work .					
	100 mm diameter pipe	Metre	60			
2.14	GI PIPE FOR SUMP RISER / DRAINAGE Providing, fixing and testing GI pipes Class 'C' (Heavy duty) of approved make conforming to IS 1239-1982 complete with G.I. fittings such as tees, crosses, plugs, sockets, elbows, reducers, unions, sleeve pieces, check nuts etc including Painting, jointing with C.I. pipes (wherever required), cutting & making good the walls, floors, R.C.C. work etc. including cutting chases & filling the same.					
	80 mm dia	RM	5			
2.15	Providing and fixing G.I reducer/hopper/elbow (Floor Drain) of 100 x 50mm, complete as per instructions of the Engineer in charge.(grating and G.I pipe to be paid separately)	Each	4			

S.NO.	DESCRIPTION OF ITEMS	UNIT	Qty	Rate (Rs)	Rate Words	Amount (Rs)
2.16	Providing and fixing 100mm dia G.I. inlet fitting consisting of 100mm dia main G.I pipe with multiple G.I. sockets (Inlets) of required diameter welded to it (as per site requirement) and fixing the same to C.I trap and setting in cement concrete, complete as per instructions of the Engineer in charge.	Each	4			

TOTAL OF SUB HEAD II - SOIL,WASTE & VENT WATER PIPES CARRIED OVER TO SUMMARY

S.NO.	DESCRIPTION OF ITEMS	UNIT	Qty	Rate (Rs)	Rate Words	Amount (Rs)
-------	----------------------	------	-----	-------------	------------	---------------

SUB HEAD III - RAIN WATER PIPES

- 3.02 providing and fixing on wall face unplasticised Rigid PVC rain water pipes conforming to IS 13592 Type A including jointinting with seal ring conforming to IS 5382 leaving 10mm gap for thermal expansion (i) Single socketed pipes

a) 110 mm diametre Metre 10

- 3.04 Providing and fixing unplasticid PVC pipe clips of approved design to un plasticised PVC rain water pipes by means of 50 x 50 x 50mm hard wood plugs, screwed with MS screws of required length including cutting brick work and fixing in cement mortar 1:4 (1 cement : 4 coarse sand) and making good the wall etc. complete.

110mm Each 4

TOTAL OF SUB HEAD III - RAIN WATER PIPES CARRIED OVER TO SUMMARY

S.NO.	DESCRIPTION OF ITEMS	UNIT	Qty	Rate (Rs)	Rate Words	Amount (Rs)
-------	----------------------	------	-----	-------------	------------	---------------

SUB HEAD IV - INTERNAL WATER SUPPLY

- 4.01 Providing & fixing GI pipes complete with GI fittings and clamps, including cutting & making good the walls etc.

Internal work- Exposed on wall

- | | | | |
|----|-------------------|-------|----|
| a) | 15mm nominal bore | Metre | 25 |
| b) | 20mm nominal bore | Metre | 25 |
| c) | 25mm nominal bore | Metre | 30 |
| d) | 32mm nominal bore | Metre | 25 |

- 4.02 Providing and fixing Chlorinated Polyvinyl Chloride (CPVC) pipes having thermal stability for hot and cold water supply including all CPVC plain & brass threaded fittings including fixing the pipe with clamps at 1.00m spacing. This includes jointing of pipes & fittings with one step CPVC solvent cement and the cost of cutting chases and making good the same including testing of joints complete as per direction of Engineer in charge.

Concealed work including cutting chases and making good the walls etc.

- | | | | |
|----|------------------------------|-------|-----|
| a) | 15mm nominal outer dia pipes | Metre | 100 |
| b) | 20mm nominal outer dia pipes | Metre | 60 |

- 4.03 Providing and fixing thermal insulation over hot water pipes with 9mm thick thermaflex or approved equivalent thermal insulation tubing, a elastomeric flexible material having hermetic blister closed cell structure of expanded synthetic rubber having a thermal conductivity not exceeding 0.040w/mk @ 40 deg C over pipes with Aluminium Cladding/ protective coating of FRP following sizes including all required accessories complete as per Manufacture's specifications .

- | | | | |
|----|-----------|-------|-----|
| a) | 15 mm dia | Metre | 100 |
| b) | 20 mm dia | Metre | 60 |

- 4.04 Providing & fixing brass stop cock of approved quality .

- | | | | |
|----|--------------------|------|----|
| a) | 15 mm nominal bore | Each | 16 |
| b) | 20 mm nominal bore | Each | 20 |

S.NO.	DESCRIPTION OF ITEMS	UNIT	Qty	Rate (Rs)	Rate Words	Amount (Rs)
4.05	Providing and fixing gunmetal gate valve with CI wheel of approved quality (Screwed end)					
a)	25mm nominal bore	Each	16			
b)	32mm nominal bore	Each	4			
4.06	Providing & fixing ball valve (brass) of approved quality , High or low pressure, with plastic floats complete. 25mm dia nominal bore	Each	4			
4.07	Painting GI pipes and fittings with synthetic enamel paint over a ready mixed priming coat, both of approved quality for new work.					
a)	15mm nominal bore	Metre	120			
b)	20mm nominal bore	Metre	70			
c)	25mm nominal bore	Metre	65			
d)	32mm nominal bore	Metre	96			
4.08	Providing and placing on terrace (at all floor levels) polyethylene water storage tank ISI : 12701 marked with cover and suitable locking arrangement and making necessary holes for inlet, out let and overflow pipes but without fittings and the base support for tank.	per ltrs	500			
4.09	Providing & fixing C.I double air valve of approved quality with bolts , nuts , rubber insertion etc complete (The tail pieces , tapers etc if required will be paid separately) 25 mm dia	Each	4			
4.1	Providing and fixing enclosed type water meter (bulk type) conforming to IS 2373 and tested by Municipal Board complete with bolts, nuts, rubber insertions etc. (The tail pieces if required will be paid separately) 25mm dia nominal bore	Each	4			
4.11	Painting GI Pipes and fittings with two coats of anti-corrosive bitumastic paint of approved quality: 25mm nominal bore	Each	48			
4.12	Providing and fixing GI Union in GI pipe including cutting and threading the pipe and making long screws etc. complete (New Work)					

S.NO.	DESCRIPTION OF ITEMS	UNIT	Qty	Rate (Rs)	Rate Words	Amount (Rs)
	15mm nominal bore	Each	6			
	20mm nominal bore	Each	5			
	25mm nominal bore	Each	10			
	32mm nominal bore	Each	6			
4.13	Making connection of GI distribution branch with GI main of following sizes by providing and fixing tee, including cutting and threading the pipe etc. complete:					
	25 to 40mm nominal bore	Each	4			
4.14	Providing and fixing Gun metal non return valve of approved quality (Screwed end):					
	25mm nominal bore horizontal	Each	4			
4.15	Providing and fixing brass ferrule with C.I. mouth cover including boring and tapping the main:					
	25mm nominal bore	Each	4			
TOTAL OF SUB HEAD IV - INTERNAL WATER SUPPLY CARRIED OVER TO SUMMARY						

S.NO.	DESCRIPTION OF ITEMS	UNIT	Qty	Rate (Rs)	Rate Words	Amount (Rs)
-------	----------------------	------	-----	-------------	------------	---------------

SUB HEAD V - SEWERAGE & DRAINAGE SYSTEM

5.01	Providing, laying and jointing glazed stoneware pipes grade 'A' with stiff mixture of cement mortar in the proportion of 1:1 (1 cement : 1 fine sand) including testing of joints etc. complete					
a)	150 mm diameter	Metre	15			
5.02	Providing and laying Non pressure NP2 RCC Pipes with collars jointed with stiff mixture of cement mortar in the proportion of 1:2 (1 cement : 2 fine sand) including testing and jointing etc complete.					
a)	150mm dia RCC Pipe	Metre	20			
5.03	Providing and laying cement concrete 1:5:10 (1 cement: 5 coarse sand: 10 graded stone aggregate 40 mm nominal size) around stoneware pipes including in bed for pipes to be laid in trenches as per standard details.					
a)	150 mm diameter	Metre	35			
5.04	Providing and fixing square mouth S.W. gully trap grade 'A' complete with C.I. Grating brick masonry chamber with bricks of class designation 75 and water tight C.I. Cover with frame of 300x300 mm size (inside) the weight of cover to be not less than 4.50 kg and frame to be not less than 2.70 kg as per standard design 150x100 mm size P type					
a)	With FPS bricks class designation 75	Each	1			
5.05	Constructing brick masonry road gully chamber 50x45x60 cm with bricks of class designation 75 in cement mortar 1:4 (1 cement :4 coarse sand) including 500x450 mm precast RCC horizontal grating with frame complete as per standard design . With F.P.S bricks					
		Each	1			

S.NO.	DESCRIPTION OF ITEMS	UNIT	Qty	Rate (Rs)	Rate Words	Amount (Rs)
5.06	Excavating trenches of required width for pipes, cables etc. Including excavation for sockets, and dressing of sides, ramming of bottoms, depth upto 1.5M including getting out the excavated soil, and then returning the soil as required, in layers not exceeding 20 cms in depth including consolidating each deposited layer by ramming, watering, etc. And disposing of surplus excavated soil as directed within a lead of 50 m Hard/dense soil. All kind of soil Pipes, cables etc, exceeding 80mm dia but not exceeding 300 mm dia	Metre	35			
5.07	Providing Sewer Connection from existing manhole in the building with the minicipal manhole including cutting road, laying the pipes and repairing the same complete in all respect as per directions.(Approx distance between two manholes 30 Mtrs) The cost of pipe shall be paid seperatly	Job	1			
TOTAL OF SUB HEAD V - SEWERAGE & DRAINAGE SYSTEM CARRIED OVER TO SUMMARY						

S.NO.	DESCRIPTION OF ITEMS	UNIT	Qty	Rate (Rs)	Rate Words	Amount (Rs)
SUB HEAD VI - PUMPS AND EQUIPMENTS						
6.01	Supplying, installing, testing and commissioning submersible type of pump with all necessary standard fittings and accessories adequate capacity of motor i/c like base plate, bend, tee etc. and flow control devices, suitable for well dia 150mm and meeting the following requirement all complete with guide wire for lifting and lowering of pump, Galvanized lifting chain, etc. as per specifications. The pump shall be complete with automatic built-up water level controller with necessary starter panel with length of control / power cable upto the panel. . Complete in all respect & giving it to working condition No. of Pumps: 2 (1 Working + 1 Standby) Capacity : 40 lpm Head : 45m	Set	4			
6.02	Supply and installation of solar system 125LPD Capacity including all connections complete in all respects.	Set	4			
TOTAL OF SUB HEAD VI - PUMPS AND EQUIPMENTS CARRIED OVER TO SUMMARY						

SUMMARY OF COST OF PLUMBING & SANITARY WORKS

S.No.	SUB HEAD	DESCRIPTION OF ITEM	AMOUNT (Rs)
1	SUB HEAD I	SANITARY FIXTURES & FITTINGS	
2	SUB HEAD II	SOIL,WASTE & VENT WATER PIPES	
3	SUB HEAD III	RAIN WATER PIPES	
4	SUB HEAD IV	INTERNAL WATER SUPPLY	
5	SUB HEAD V	SEWERAGE & DRAINAGE SYSTEM	
6	SUB HEAD VI	PUMPS AND EQUIPMENTS	
		TOTAL OF PLUMBING AND SANITARY WORKS CARRIED TO GRAND SUMMARY	

(C) SCHEDULE OF QUANTITIES - ELECTRICAL WORKS

S.NO.	DESCRIPTION	UNIT	QTY	Rate (Rs)	Rate (Words)	Amount (Rs)
-------	-------------	------	-----	-------------	----------------	--------------

1 INTERNAL WIRING :

1.1 Point Wiring :

Supplying, wiring, testing and commissioning for lights, ceiling fans, exhaust fans and 6 A socket outlets (where 6 A socket connected to lighting circuit) using 1.5 Sqmm stranded copper, 1100 volts grade, PVC insulated wires drawn through, PVC conduit including laying of conduits in a concealed/ surface manner using necessary conduit accessories, junction boxes, switch outlet boxes, switch plates, bends, collars, clamps, 6/16 A, one way/ Two way switches, fan regulator boxes, etc. shall be flush mounted in brick wall or on the surface of wall for surface installation as required.

The rate for point wiring (using 2 Nos. 1.5 Sqmm 1100 V grade PVC insulated copper wires for phase & 1 No. 1.5 Sq.mm copper conductor wire for earth) shall include the circuit wiring (using 2.5 Sqmm, 1100 V grade PVC insulated copper wires) from the DB up to the first light/fan/6 A convenience socket outlet control switch on wards to light/fan then the looping between switches /lights /fans /6 A socket etc. The circuit wiring will not be paid separately. However where the lights are controlled directly from DB without local control switch, the quoted rates shall not include cost of switches/MCB etc.

Also the rate shall include earthing of each light, fan outlet boxes, switches, switch plates, switch control boxes, 6A sockets using 1.5 Sqmm copper, PVC insulated wires and flexible conduit from junction box to the fitting as required.

- | | | | |
|----|---|------|----|
| a) | Primary light point i.e. one light controlled by one switch or first light in the group in which more than one lights are controlled by one switch. | Nos. | 25 |
| b) | Primary light point directly controlled by existing MCB in DB. | | 2 |
| c) | Secondary light points (Looped light points from Primary light points) | Nos. | 10 |
| d) | Light points controlled by 2 Nos 2 way switch. | | 2 |
| e) | One 6 Amps, 2/3 pin switched socket outlet controlled by one 6 Amps switch. | Nos. | 10 |

- 1.2** Wiring for 6/16 Amp power outlet with 4 Sqmm PVC insulated stranded copper conductor wires in recessed/surface PVC conduit including cutting/filling chases, providing conduit with conduit accessories, saddles supply and fixing of 6 pin 6/16 Amps shuttered switched socket with internal wiring in G.I. box, earthing of 3rd pin with PVC insulated, green colour 2.5 Sq.mm copper wire, complete with all accessories as required. (Not more than two outlets shall be wired in one circuit).

Nos. 10

S.NO.	DESCRIPTION	UNIT	QTY	Rate (Rs)	Rate (Words)	Amount (Rs)
1.3	Wiring for 6 Amp socket outlet with 2.5 Sqmm PVC insulated stranded copper conductor wires in recessed/surface PVC conduit including cutting/filling chases, providing conduit with conduit accessories, saddles supply and fixing of 2/3 pin 6 Amps shuttered switched socket with internal wiring in G.I. box, earthing of 3rd pin with PVC insulated, green colour 1.5 Sq.mm copper wire, complete with all accessories as required. (Not more than eight outlets shall be wired in one circuit).	Nos.	10			
1.4	PVC Conduit : Supplying and installation of following sizes of PVC conduit in recess/ on surface including all accessories, saddles, M.S. junction/ pull boxes, G.I. fish wire, fixing hardware etc including chasing the wall/floor and plastering the chased portion and making good the damages etc., complete as required.					
a)	25 mm dia	RM	50			
b)	32 mm dia	RM	50			
c)	38 mm dia	RM	50			
d)	50 mm dia	RM	30			
1.5	Wiring Supply and drawing of following sizes of PVC insulated stranded copper conductor wires of 1100 Volts grade in existing conduit including connection/termination etc as required.					
a)	4x25+2x16 sq mm	RM	60			
TOTAL OF INTERNAL WIRING CARRIED OVER TO SUMMARY						
2)	CABLES:					
2.1	1.1 KV Cabling Supply installation, testing and commissioning of following sizes of PVC sheathed PVC/XLPE insulated Aluminium conductor / copper conductor power / multicore control armoured cable of 1.1 KV grade on wall, or in existing cable tray /masonry ducts/hume pipe with fixing hardware etc or 750 mm below ground, including excavation for trench , sand cushioning, brick covering etc. refilling the riddled earth, reaming & depositing excess earth as required.					
a)	3.5 C x 120 Sqmm Aluminium XLPE Cable	RM	100			
2.2	Cable Termination Supply and making end termination with brass double compression glands for the following PVC insulated PVC sheathed & armoured 1100 V grade cable including cost of crimping lugs/ferrules, compression glands, solder, cable sockets, insulation tape etc complete as required.					
a)	3.5 C x 120 Sqmm Aluminium XLPE Cable	Nos	2			
TOTAL OF CABLES CARRIED OVER TO SUMMARY						
3)	EARTHING :					

S.NO.	DESCRIPTION	UNIT	QTY	Rate (Rs)	Rate (Words)	Amount (Rs)
-------	-------------	------	-----	-------------	----------------	--------------

3.1 Earthing Strip/Wires

Supply, laying, fixing & terminating of following sizes of Cu/GI strip/wire clamped to walls, cable trays etc for equipment/ System earthing complete as required including inter connection between length at joints, all fixing accessories saddles, clamps etc and other fixing hardware material as required for proper installation.

a)	50 x 3 mm copper strip	RM	75			
TOTAL OF EARTHING CARRIED OVER TO SUMMARY						

4)	LIGHTING FIXTURES, ELECTRICAL HOOD AND FANS					
	Supply, Assembling, installation, testing & commissioning of following type of light fixtures and fans. All fixtures shall be provided with power factor improvement capacitors, electronic control gear & lamps as per requirements and installation arrangement using proper support etc. complete as required.					
a	Decon wall bracket 5AQ with 2x9 W LED	Nos.	16			
b	Decon wall bracket 05AAM with 9w LED	Nos.	16			
c	Decon wall bracket 29AAM with 2X 9 w LED	Nos.	24			
d	Decon wall bracket 05PL with 2x 9w LED (NICKEL PLATED)	Nos.	12			
e	Decon wall bracket 29PL with 2X 23 w CFL (NICKEL PLATED)	Nos.	6			
f	Decon Pendant 04WU with 9 w LED	Nos.	6			
g	Decon Surface Mounted light 03NBG - N270 with 9 w LED	Nos.	20			
h	Decon Surface Mounted light 03NBG-N200 with 9 w LED	Nos.	20			
i	Decon recessed down light LO2 ACV-3 (LED) 1x3 w	Nos.	30			
j	Decon recessed down light L02ACX(LED) 12 w	Nos.	16			
k	Decon recessed down light L02ACW, 6W	Nos.	16			
l	Decon Mirror light 09 BK Fin 01 with 2X9 w LED	Nos.	4			
m	PHILIPS Endura Next Batted LED40S-6500 L120 PIR WH	Nos.	10			
n	PHILIPS LED BBG360 3 x LXML-10/ww SI	Nos.	6			
o	Decon gate light 09 BU with 12 W LED	Nos.	3			
p	Providing, installing, testing and commissioning of pre-wired Flexible LED Strip LS06-005-120-WH-50 ; IP20 WIPRO	EACH	20			
q	Providing, installing, testing and commissioning of Driver for LED STRIP LG ,40-24 WIPRO	EACH	9			
r	Decorative Chandelier (base price 15000 /-)	Nos.	4			
s	225mm dia 900 rpm exhaust fan with louvre shutter	Nos.	16			
t	1200mm sweep ceiling fan	Nos.	56			
u	Providing and fixing electric chimney Faber make and AEROSTATION GLAMOUR 3D FT AS60 600 mm wide with suction 1000m3 /hr, antique silver	Each	4			

S.NO.	DESCRIPTION	UNIT	QTY	Rate (Rs)	Rate (Words)	Amount (Rs)
-------	-------------	------	-----	-------------	----------------	--------------

TOTAL OF LIGHTING FIXTURES, ELECTRICAL HOOD AND FANS CARRIED OVER TO SUMMARY

5) DATA / VOICE WIRING SYSTEM :

CONDUITING

- 5.1** Supplying and installation of following sizes of PVC conduit in recess/ on surface including all accessories, M.S. junction/ pull boxes, G.I. fish wire, fixing hardware etc including chasing the wall/floor and plastering the chased portion and making good the damages etc., complete as required.

25 mm dia RM 25

5.2 Wiring

Supplying and drawing of following size PVC insulated PVC sheathed annealed tinned copper conductor 0.61 mm dia telephone wires conforming to ITD-S/SW-113B in existing PVC conduit/G.I. pipe/ cable trays/ hume pipes etc complete as required.

2Pair RM 50

5.3 Telephone Socket Outlet

Supply and installation of plug - in type telephone socket outlet (RJ-11) with G.I.outlet box and cover plate complete as required.

a Single plug in type. Nos. 20

b Double plug in type. Nos. 3

TOTAL OF DATA/VOICE WIRING SYSTEM CARRIED OVER TO SUMMARY

6) CCTV SYSTEM

- a)** Supply, installation, testing & commissioning of 1/3 " CCD 420 TVL ,1.0 Lux / F1.4,3.6 mm Lense, Auto Electronic Sensor, Auto Gain Control, Back Light Compensation, DC12V, Colour camera housed in Dummy Dome, with power supply unit

Nos. 1

- b)** Supply, Installation, Testing & Commissioning of 12 channel DVR, 100 FPS Display,100 FPS recording,500 GB HDD, MPEG compression format, with TCP / IP, Internet, LAN, WAN connectivity.

Nos. 1

- c)** Supply, Installation, Testing & Commissioning of 21" LCD monitor with Keyboard and mouse.

Nos. 1

- d)** Supply and laying of RG 6 tinned copper conductor co-axial cable in existing conduit.

RMT 75

TOTAL OF CCTV SYSTEM CARRIED OVER TO SUMMARY

7) VEDIO DOOR PHONE SYSTEM

S.NO.	DESCRIPTION	UNIT	QTY	Rate (Rs)	Rate (Words)	Amount (Rs)
-------	-------------	------	-----	-------------	----------------	--------------

7.1 Installation, testing and commissioning of Stand - alone vedio door phone including supply and laying & termination of audio/vedio/signal/power cable in suitable pipe.

a)	Indoor unit	Nos.	4
b)	Outdoor unit	Nos.	4
c)	Outdoor unit to indoor monitor	Mtrs	15

TOTAL OF VEDIO DOOR PHONE SYSTEM CARRIED OVER TO SUMMARY

SUMMARY OF ELECTRICAL WORKS

S.NO.	DESCRIPTION	AMOUNT (Rs.)
1	TOTAL OF INTERNAL WIRING	
2	TOTAL OF CABLES	
3	TOTAL OF EARTHING	
4	TOTAL OF LIGHTING FIXTURES, ELECTRICAL HOOD AND FANS	
5	TOTAL OF DATA/VOICE WIRING SYSTEM	
6	TOTAL OF CCTV SYSTEM	
7	TOTAL OF VEDIO DOOR PHONE SYSTEM	
	TOTAL OF ELECTRICAL WORKS CARRIED TO GRAND SUMMARY	

S.NO	GRAND SUMMARY OF QUOTES	AMOUNT (Rs)
A	TOTAL COST OF CIVIL WORKS	
B	TOTAL COST OF PLUMBING and SANITARY	
C	TOTAL COST OF ELECTRICAL	
	BIDDERS QUOTE (A+B+C)	

BIDDERS QUOTE IN WORDS.....

.....

BIDDERS SIGNATURE

BIDDERS NAME

BIDDERS SEAL

SECTION - V Approved List of Makes and Tender Drawings

Following is list of approved make unless otherwise specified/as approved
List of approved Makes /Brands(Civil)

S.No	Description	Approved make
1	Steel	Tata,Sail, Rini ,Jindal, Essar
2	Cement	JP Rewa ,Shree , Ultratech,ACC
3	Ceramic tiles	Kajaria,Johnson, Nitco , Morbito
4	Paint(distemper,plastic, enamel)_	Berger,Asian,Shalimar
5	Cement paint	Snowcem
6	Glass	Modi,Triveni
7	Aluminium Fittings	Classic,agent
8	Aluminium Sections	Jindal,Hindalco
9	Bitumen	Shalimar Tar
10	Waterproofing Compound	Penetron ,PIDILITE
11	PVC Water Tanks	Syntex
12	Commercial /teak/other plies/boards	Greenply,Duro,Century, Alpro
13	RMC	Ultratech, ACC, RMC India, Ahlcon RMC Pvt. Ltd.
14	Flush doors	Greenply,Duro,Century, Alpro
15	Hardware/Locks/handles/Kitchen appliances e	Hettich,Dorset,Kich/Godrej/Golden/Kaff

List of approved Makes/Brands(Plumbing/Sanitary) unless other wise specified

S.N	Materials	I.S.No	Brand Name
1.	Vitreous China Sanitaryware (1 st class quality)	2556	HINDWARE
			CERA
2.	Plastic W.C Seats		ADMIRAL
			COMMANDER
3.	C.P fittings		JAQUAR,
			PARKO
			HINDWARE
4.	C.P Bottle Trap		KINGSTON
			JAQUAR
5.	Stainless Steel Sink		NIRALI
			AMC
			KINGSTON
			NEELKANT
6.	Bath Room C.P accessories		ESS ESS
			PARKO
7	GI and MS pipes upto 150 dia	1239	GEM
			Jindal Hissar
			SURYA PRAKASH
			KAPILANSH
8.	Sand Cast Iron Pipes & fittings	1729	NECO
			KAJECO
9.	G.I. Fittings (Malleable Cast Iron)	1879 (Part I to X)	UNIK
			KS
			KENT
10.	CPVC Pipe & Fittings	DIN 8077 and DIN 8078	
			AJAY, ASTRA ,SUPREME
			PRINCE

S.N	Materials	I.S.No	Brand Name
11	Stoneware pipes & Gully traps	651	PERFECT Or Eqv.
12	R.C.C pipes	458	
13	CILA S/S pipes	1536	KESORAM IISCO ELECTROSTEEL
14	C.I. fittings	1538	NEEL KARTAR
15	UPVC pipes for rain water pipes	4985-1981	POLYPACK FINOLEX SUPREME
16	Gunmetal Valve (Fullway valve)	778	
	(a) Class-I		ZOOTO LEADER SANT
	(b) Class-II		LEADER SANT
17	Ball valve		RB CIM IBP
18	Butterfly Valve	13095-1991	KARTAR KSB CASTLE
19	Air Release Valve		KIRLOSKAR IVC
20	Pressure Reducing Valve		ZOOTO Or Eqv.
21	C.I double flanged sluice valve	780	KIRLOSKAR LEADER
22	C.I double flanged non return valves (65mm dia and above)	5312	KIRLOSKAR LEADER
23	Water Meter		KENT
24	Float valve (gunmetal) upto 40mm		LEADER SANT
25	Float valve (C.I) 50mm		IVC

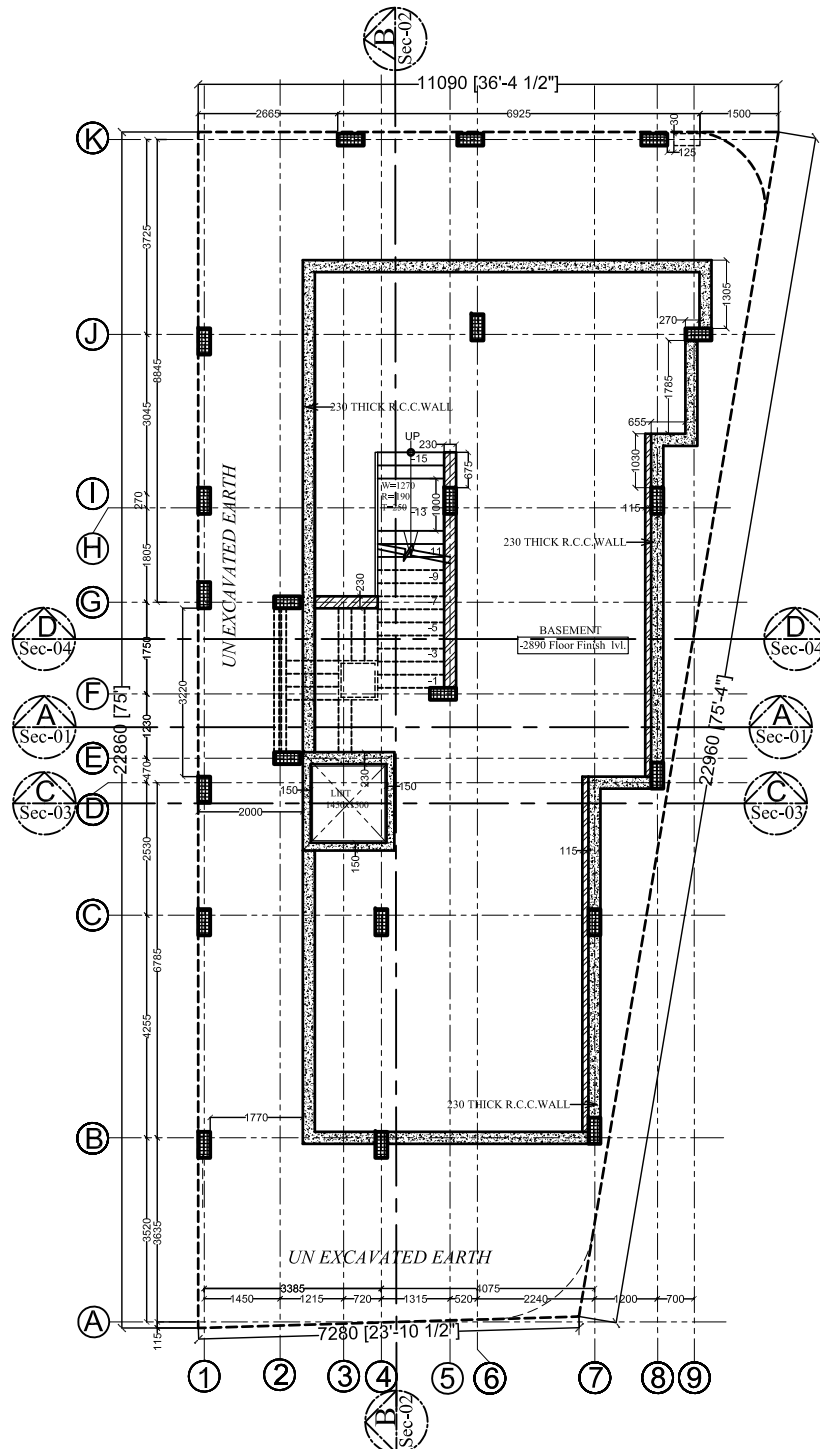
S.N	Materials	I.S.No	Brand Name
	and above		LEADER
26	C.I Manholes cover	1726	NECO Or Eqv.
27	SFRC Grating/Manhole Cover		KK Or Equivalent
28	Plastic Encapsulated Foot Rungs		KGM Or Equivalent
28	Bib & stop cocks (brass)	781	JDR
			GPA
29	Mirror		ATUL
			GOLDENFISH
30	Grating for Floor Trap & Floor Drain		GMGR
(a)	Cast Iron		LEADER
			ZOOTO
(b)	Gunmetal		RB
			CIM
			IBP
31	Water Flow Meter		KENT

LIST OF APPROVED MAKES OF EQUIPMENT (Electricals)UNLESS OTHERWISE SPECIFIED

S.NO	DESCRIPTION	MAKE
1.	LT Panels	CPRI type test passed vendor subject to approval by owner / consultant
2.	MCB Distribution Boards	Schneider electric/ L&T/Legrand
3.	Air Circuit Breakers	L&T/Schneider electric
4.	Moulded case Circuit Breaker	L&T /Schneider electric
5.	Miniature Circuit Breaker	Legrand / Schneider electric/ L&T
6.	Contactors and starters	L&T/Schneider electric
7.	Change over switches	HPL/L&T
8.	Voltage Transformer	AE/Kappa or subject to approval by consultant
9.	Current Transformer	AE/Kappa. or subject to approval by consultant
10.	R.C.C.B.	Legrand / Schneider electric/ L&T
11.	Timers	L&T /Schneider electric
12.	Push Buttons	L&T /Schneider electric or subject to approval by consultant
13.	Indicating lamps	L&T /Schneider electric / or subject to approval by consultant
14.	Fuses and fuse bases	L&T /Schneider electric

15.	Digital Meters	Conzerv/L&T/AE
16.	Selector switches and rotary switches	L&T/Kaycee.
17.	Indicating Instruments	Conserve/L&T/AE
18.	Terminals	Elmex
19.	PVC FRLS insulated copper wires	Finolex/Nicco/Polycab/Havells/KEI/
20.	Crimping type lugs	Dowells
21.	Cable Glands	Dowells
22.	PVC rigid conduits	BEC/AKG/Atul
23.	M.S Conduits (ISI Mark)	BEC/AKG/Atul
24.	Modular Switches, Sockets, Plugs etc.	Legrand Mosaic/MK Blenze /North-West
25.	Industrial sockets in sheet steel enclosure	L&T /Schneider electric / Legrand
26.	Light Fitting	Philips , BAJAJ, CHROMPTON
27.	Ceiling fans/Exhaust Fans	CGL/alstom
28.	Relays	Areva/Easun & Reyrolle/L&T
29.	HT/LT Cables	Polycab/Nicco/Skytone/KEI/Havells

30.	Capacitors	Epcos / L&T/Schneider electric
31.	Cable Trays / Raceways	As / approved samples
32.	Battery	Exide/Standard
33.	Battery charger	Volstat/AE/Mahamai
34.	Telephone Wires/cables	Skytone / Polycab/KEI / Havells
35.	Data Cables / accessories	Systimax / Amp
36.	Fire alarm system	Daksh
37.	CCTV	Daksh
38.	Video Door Phone	Fermax/Alba/Zacon



NOTES

- # THIS DRAWING IS THE PROPERTY OF MS VASTU MANDAL AND IS NOT TO BE USED FOR ANY PURPOSE OTHER THAN WHICH IT IS ISSUED.
- # THIS DRAWING IS NOT TO BE REPRODUCED TRACED OR COPIED WITHOUT THE PRIOR PERMISSION OF THE ARCHITECT.
- # ALL DIMENSIONS MUST BE VERIFIED AT THE SITE BEFORE THE COMMENCEMENT OF THE WORK.
- # ALL WRITTEN DIMENSIONS ARE TO BE FOLLOWED AND THE DRAWING IS NOT TO BE SCALED.
- # ANY DISCREPANCIES FOUND IN THE DRAWING SHALL BE BROUGHT TO THE NOTICE OF THE ARCHITECT IMMEDIATELY.
- # THE SOLE COPYRIGHT FOR THIS PLAN LIES WITH VASTU MANDAL ARCHITECTS
- # MISUSE OF THIS DRAWING OR COPYRIGHT INFRINGEMENT IS LIABLE FOR STRICT LEGAL ACTION.

REVISION

S.No.	R.No.	Date	Revisions	Issued To
1.		02.05.16		V.B.Mittal
2.	R-01	27.07.16	Basement Staircase Width Modified	V.B.Mittal
3.		02.09.16		V.B.Mittal
4.		05.10.16		V.B.Mittal
5.		29.11.16		V.B.Mittal
6.	R-02	08.12.16	Brick work revised.	V.B.Mittal
7.		09.03.17		V.B.Mittal

Drawing Title:

BASEMENT FLOOR PLAN

Project:

Proposed Residential Project for
The O.I.C Ltd. at Plot No E-409 , G.K-II

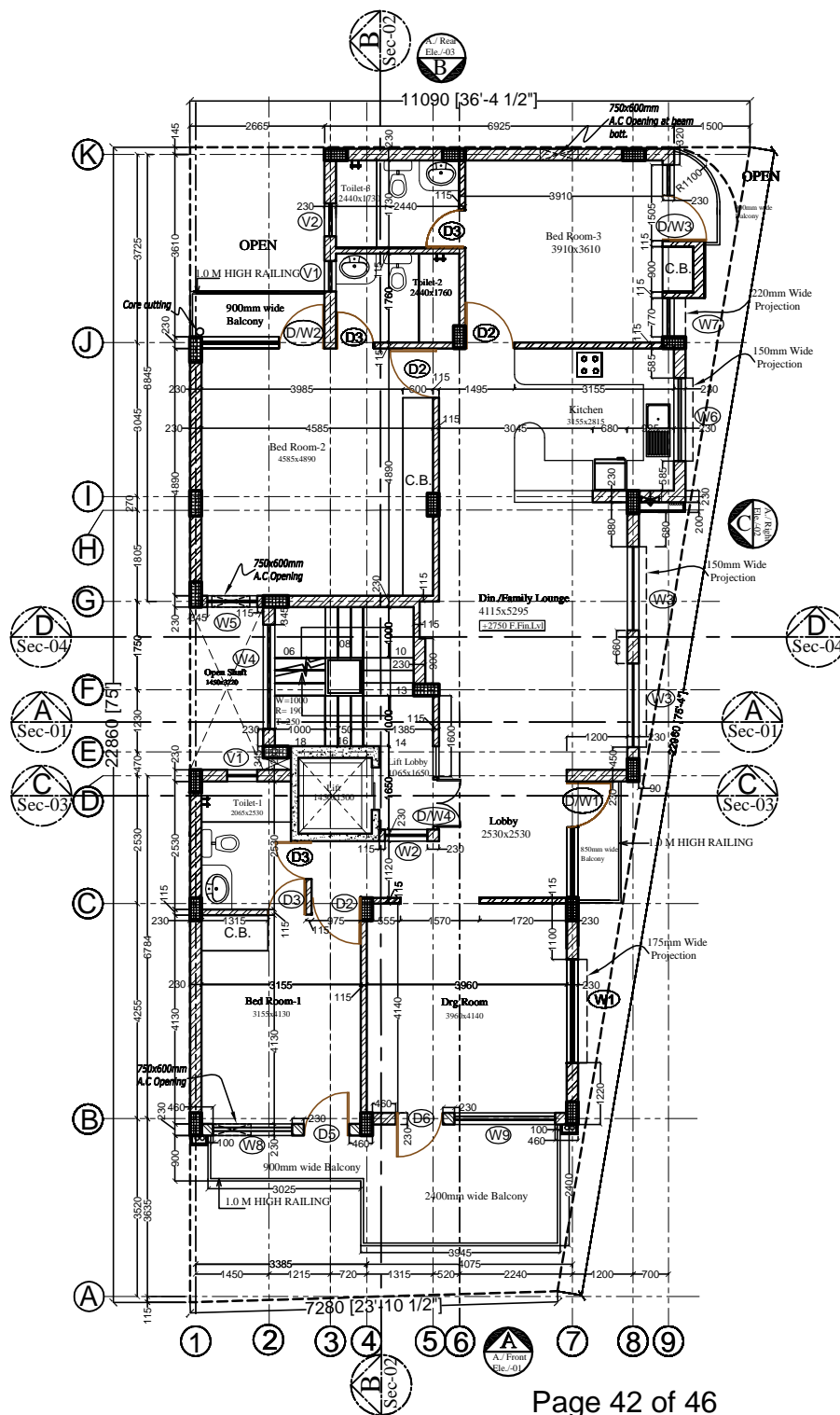
VASTU MANDAL
Architects, Engineers & Interior Designers
F-328, Lado Sarai, Old M.B Road, N.D- 30
Ph. 41665455, E-mail- vastumandal@gmail.com

Date :
27.07.16

Drawn By:
Pooja Rawat



DRG.:
A./ B.F.P./-01



THIS DRAWING IS THE PROPERTY OF M.S. VASTU MANDAL
AND IS NOT TO BE USED FOR ANY PURPOSE OTHER THAN
WHICH IT IS ISSUED.
THIS DRAWING IS NOT TO BE REPRODUCED TRACED OR
COPIED WITHOUT THE PRIOR PERMISSION OF THE
ARCHITECT.
ALL DIMENSIONS MUST BE VERIFIED AT THE SITE BEFORE
THE COMMENCEMENT OF THE WORK.
ALL WRITTEN DIMENSIONS ARE TO BE FOLLOWED AND
THE DRAWING IS NOT TO BE SCALED.
ANY DISCREPANCIES FOUND IN THE DRAWING SHALL BE
BROUGHT TO THE NOTICE OF THE ARCHITECT IMMEDIATELY.
THE SOLE COPYRIGHT FOR THIS PLAN LIES WITH
VASTU MANDAL ARCHITECTS
MISUSE OF THIS DRAWING OR COPYRIGHT INFRINGEMENT
IS LIABLE FOR STRICT LEGAL ACTION.

REVISION

S.No.	R.No.	Date	Revisions	Issued
1.	-	02.05.16	-	V.B. Mittal
2.	-	02.09.16	-	V.B. Mittal
3.	R-1	13.09.16	Front Balcony Refined	V.B. Mittal
4.	R-2	29.11.16	Bedroom-2 Refined	V.B. Mittal
5.	R-3	16.02.17	Brick Work Refined	V.B. Mittal
6.	R-4	09.03.17	Brick Work Modified	V.B. Mittal
7.	R-5	08.04.17	D/W Schedule Modified	V.B. Mittal
8.	R-6	06.05.17	W4 & W8 Modified	V.B. Mittal
9.	R-7	09.05.17	Door Window Modified	V.B. Mittal

DOOR/WINDOW SCHEDULE

S.NO.	Width	Height	Cill. Lvl.	Lint. Lvl.	QTY
W1	2050	1640	+900	Beam Bott.	01
W2	835	1940	+600	Beam Bott.	01
W3	1650	1250	+900	2150	02
W4	2060	880	900 from existing Lvl.	Beam Bott.	01
W5	990	1900	+250	Beam Bott.	01
W6	1645	1000	1150	Beam Bott.	01
W7	770	1250	+250	Beam Bott.	01
W8	1565	1250	+900	Beam Bott.	01
W9	1990	2290	+250	Beam Bott.	01
D/W1	2300	1900	+250	Beam Bott.	01
D/W2	2435	1900	+250	Beam Bott.	01
D/W3	1505	1900	+250	Beam Bott.	01
V1	600	900	+1250	Beam Bott.	02
V2	650	900	+1250	Beam Bott.	01

WOODEN DOOR SCHEDULE

S.NO.	Width	Height	Cill. Lvl.	Lint. Lvl.	QUANT
D2	975	2150	-	2150	3
D3	750	2150	-	2150	4
D/W4	1650	1900	+250	Beam Bottom	1
D5	900	2150	-	2150	1
D6	935	2150	-	Beam Bottom	1

Drawing Title:

GROUND FLOOR PLAN

Project:

Proposed Residential Project for
The O.I.C. Ltd. at Plot No E-409 ,
G.K-II

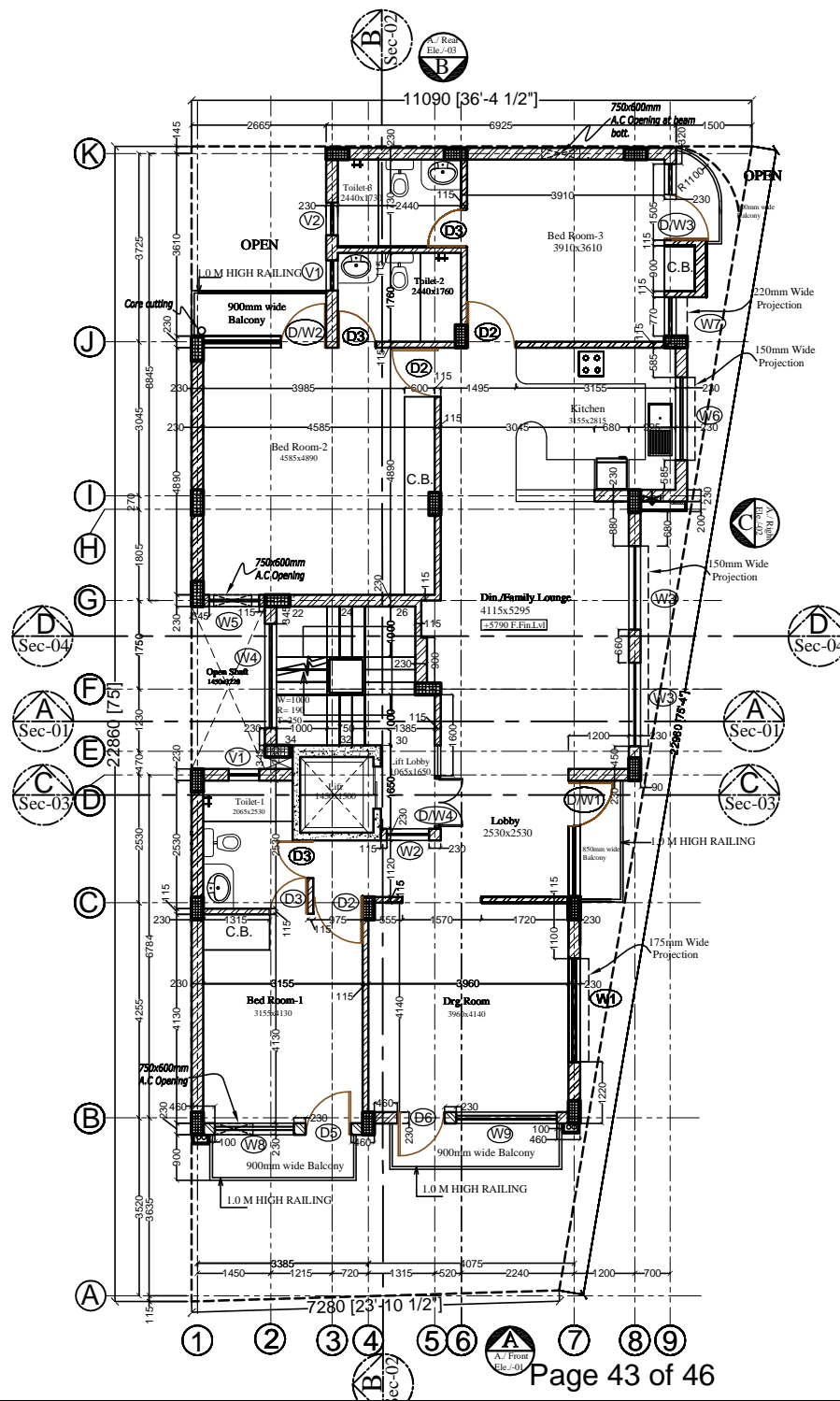
VASTU MANDAL
Architects, Engineers & Interior Designers
F-328, Lado Sarai, Old M.B. Road, N.D.-30
Ph. 41665455, E-mail- vasmu Mandal@gmail.com

Date :
02.05.16

Drawn By:
Pooja Rawat



DRG.:
A./ G.F.P./-03



THIS DRAWING IS THE PROPERTY OF M/S VASTU MANDAL
AND IS NOT TO BE USED FOR ANY PURPOSE OTHER THAN
WHICH IT IS ISSUED.
THIS DRAWING IS NOT TO BE REPRODUCED TRACED OR
COPIED WITHOUT THE PRIOR PERMISSION OF THE
ARCHITECT.
ALL DIMENSIONS MUST BE VERIFIED AT THE SITE BEFORE
THE COMMENCEMENT OF THE WORK.
ALL WRITTEN DIMENSIONS ARE TO BE FOLLOWED AND
THE DRAWING IS NOT TO BE SCALED.
ANY DISCREPANCIES FOUND IN THE DRAWING SHALL BE
BROUGHT TO THE NOTICE OF THE ARCHITECT IMMEDIATELY.
THE SOLE COPYRIGHT FOR THIS PLAN LIES WITH
VASTU MANDAL ARCHITECTS
MISUSE OF THIS DRAWING OR COPYRIGHT INFRINGEMENT
IS LIABLE FOR STRICT LEGAL ACTION.

REVISION

S.No.	R-No.	Date	Revisions	Issued
1.		02.05.16		V.B.Mital
2.		29.11.16		V.B.Mital
3.	R-1.	09.03.17	Brick Work Modified	V.B.Mital

DOOR/WINDOW SCHEDULE

S.NO.	Width	Height	Cill. Lvl	Lint. Lvl.	QTY
W1	2050	1640	+900	Beam Bott.	01
W2	835	1940	+600	Beam Bott.	01
W3	1650	1250	+900	2150	02
W4	2060	880	900 from existing Lvl.	Beam Bott.	01
W5	990	1900	+250	Beam Bott.	01
W6	1645	1000	1150	Beam Bott.	01
W7	770	1250	+250	Beam Bott.	01
W8	1565	1250	+900	2150	01
W9	1990	2290	+250	Beam Bott.	01
D/W1	2300	1900	+250	Beam Bott.	01
D/W2	2435	1900	+250	Beam Bott.	01
D/W3	1505	1900	+250	Beam Bott.	01
V1	600	900	+1250	Beam Bott.	02
V2	650	900	+1250	Beam Bott.	01

WOODEN DOOR SCHEDULE

S.NO.	Width	Height	Cill. Lvl	Lint. Lvl.	QUAN
D2	975	2150	—	2150	3
D3	750	2150	—	2150	4
D/W4	1650	1900	+250	Beam Bottom	1
D5	900	2150	—	2150	1
D6	935	2150	—	Beam Bottom	1

Drawing Title:

FIRST FLOOR PLAN

Project:

Proposed Residential Project for
The O.I.C Ltd. at Plot No E-409 , G.K.

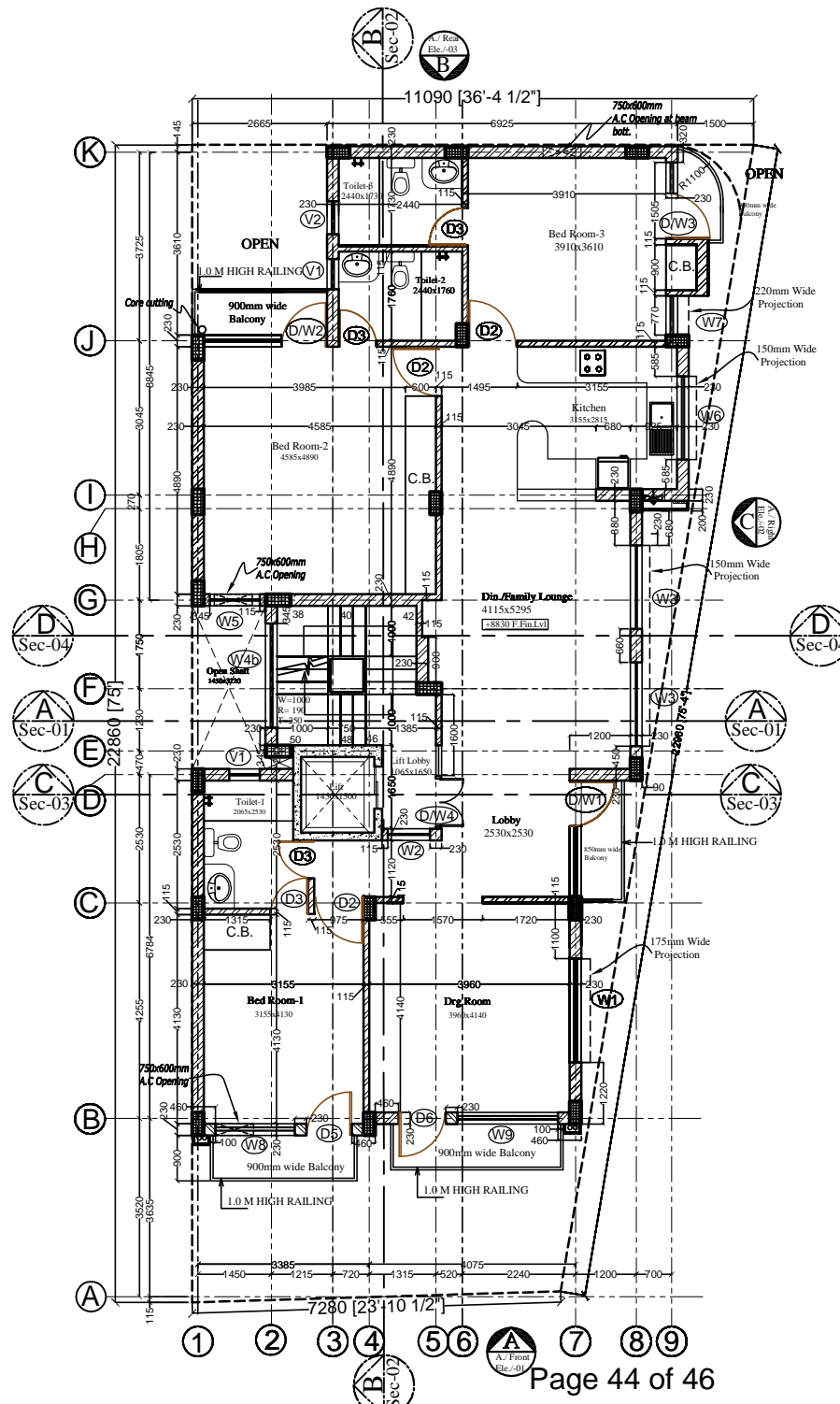
VASTU MANDAL
Architects, Engineers & Interior Designers
F-328, Lado Sarai, Old M.B. Road, N.D.-30
Ph. 41665455, E-mail- vastumandal@gmail.com

Date :
02.05.16

Drawn By:
Pooja Rawat



DRG.:
A./F.F.P./04



THIS DRAWING IS THE PROPERTY OF M.S. VASTU MANDAL AND IS NOT TO BE USED FOR ANY PURPOSE OTHER THAN WHICH IT IS ISSUED.

THIS DRAWING IS NOT TO BE REPRODUCED TRACED OR COPIED WITHOUT THE PRIOR PERMISSION OF THE ARCHITECT.

ARCHITECT:

ALL DIMENSIONS MUST BE VERIFIED AT THE SITE BEFORE THE COMMENCEMENT OF THE WORK.

ALL WRITTEN DIMENSIONS ARE TO BE FOLLOWED AND THE DRAWING IS NOT TO BE SCALED.

ANY DISCREPANCIES FOUND IN THE DRAWING SHALL BE BROUGHT TO THE NOTICE OF THE ARCHITECT IMMEDIATELY.

THE SOLE COPYRIGHT FOR THIS PLAN LIES WITH VASTU MANDAL ARCHITECTS

MISUSE OF THIS DRAWING OR COPYRIGHT INFRINGEMENT IS LIABLE FOR STRICT LEGAL ACTION.

REVISION				
S.No.	R.No.	Date	Revisions	Issued
1.		02.05.16		V.B.Mittal
2	R-1.	09.03.17	Brick Work Modified	V.B.Mitt

DOOR/WINDOW SCHEDULE

S.NO.	Width	Height	Cill. Lvl	Lint. Lvl.	C
W1	2050	1600	+900	Beam Bott.	
W2	835	1900	+600	Beam Bott.	
W3a	1650	1600	+900	Beam Bott.	
W4b	2060	840	900 from landing SL	Beam Bott.	
W5	990	1250	+900	Beam Bott.	
W6	1645	1000	1150	Beam Bott.	
W7	770	1250	+900	Beam Bott.	
W8	1565	1250	+900	2150	
W9	1990	2250	250	Beam Bott.	
D/W1	2300	1900	+250	Beam Bott.	
D/W2	2435	1900	+250	Beam Bott.	
D/W3	1505	1900	+250	Beam Bott.	
V1	600	900	+1250	Beam Bott.	
V2	650	900	+1250	Beam Bott.	

WOODEN DOOR SCHEDULE

S.NO.	Width	Height	Cill. Lvl	Lint. Lvl.	QUANT
D2	975	2150	—	2150	3
D3	750	2150	—	2150	4
D/W4	1650	1900	+250	Beam Bottom	1
D5	900	2150	—	2150	1
D6	935	2150	—	Beam Bottom	1

Drawing Title:

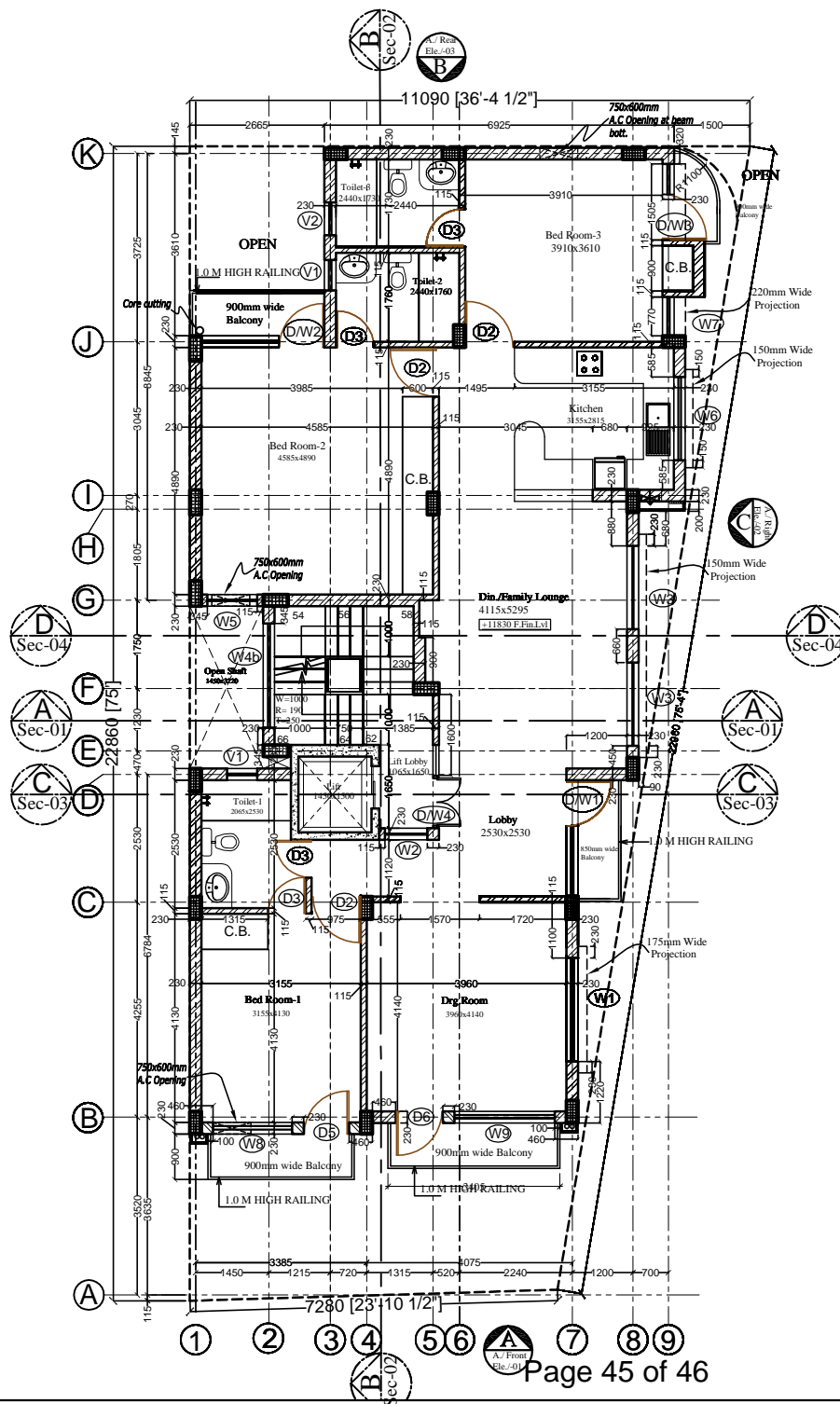
SECOND FLOOR PLAN

Project:

Proposed Residential Project for
The O.I.C Ltd. at Plot No E-409 , G.K.-

VASTU MANDAL
Architects, Engineers & Interior Designers
F-328, Lado Sarai, Old M.B. Road, N.D.-30
Ph. 41665455, E-mail- vastumandal@gmail.com

Date : 02.05.16
Drawn By: Pooja Rawat
DRG.: A./ S.F.P./05



THIS DRAWING IS THE PROPERTY OF M/S VASTU MANDAL AND IS NOT TO BE USED FOR ANY PURPOSE OTHER THAN WHICH IT IS ISSUED.

THIS DRAWING IS NOT TO BE REPRODUCED TRACED OR COPIED WITHOUT THE PRIOR PERMISSION OF THE ARCHITECT.

ALL DIMENSIONS MUST BE VERIFIED AT THE SITE BEFORE THE COMMENCEMENT OF THE WORK.

ALL WRITTEN DIMENSIONS ARE TO BE FOLLOWED AND THE DRAWING IS NOT TO BE SCALED.

ANY DISCREPANCIES FOUND IN THE DRAWING SHALL BE BROUGHT TO THE NOTICE OF THE ARCHITECT IMMEDIATELY.

THE SOLE COPYRIGHT FOR THIS PLAN LIES WITH VASTU MANDAL ARCHITECTS

MISUSE OF THIS DRAWING OR COPYRIGHT INFRINGEMENT IS LIABLE FOR STRICT LEGAL ACTION.

REVISION				
S.No.	R-No.	Date	Revisions	Issued
1.		02.05.16		V.B.Mite
2.	R-1	09.03.17	Brick Work Modified	V.B.Mit
3.	R-2	08.04.17	Schedule Refined	V.B.Mit

DOOR/WINDOW SCHEDULE					
S.NO.	Width	Height	Ch. Lvl	Lint. Lvl.	C
W1	2050	1600	+900	Beam Bott.	
W2	835	1900	+600	Beam Bott.	
W3a	1650	1600	+900	Beam Bott.	
W4b	2060	840	+900	Beam Bott.	
W5	990	1250	+900	Beam Bott.	
W6	1645	1000	+1150	Beam Bott.	
W7	770	1250	+900	Beam Bott.	
W8	1565	1250	+900	2150	
W9	1990	2250	250	Beam Bott.	
D/W1	2300	1900	+250	Beam Bott.	
D/W2	2435	1900	+250	Beam Bott.	
D/W3	1505	1900	+250	Beam Bott.	
V1	600	900	+1250	Beam Bott.	
V2	650	900	+1250	Beam Bott.	

WOODEN DOOR SCHEDULE					
S.NO.	Width	Height	Ch. Lvl	Lint. Lvl.	QUAN
D2	975	2150	—	2150	3
D3	750	2150	—	2150	4
D/W4	1650	1900	+250	Beam Bottom	1
D5	900	2150	—	2150	1
D6	935	2150	—	Beam Bottom	1

Drawing Title:

THIRD FLOOR PLAN

Project:

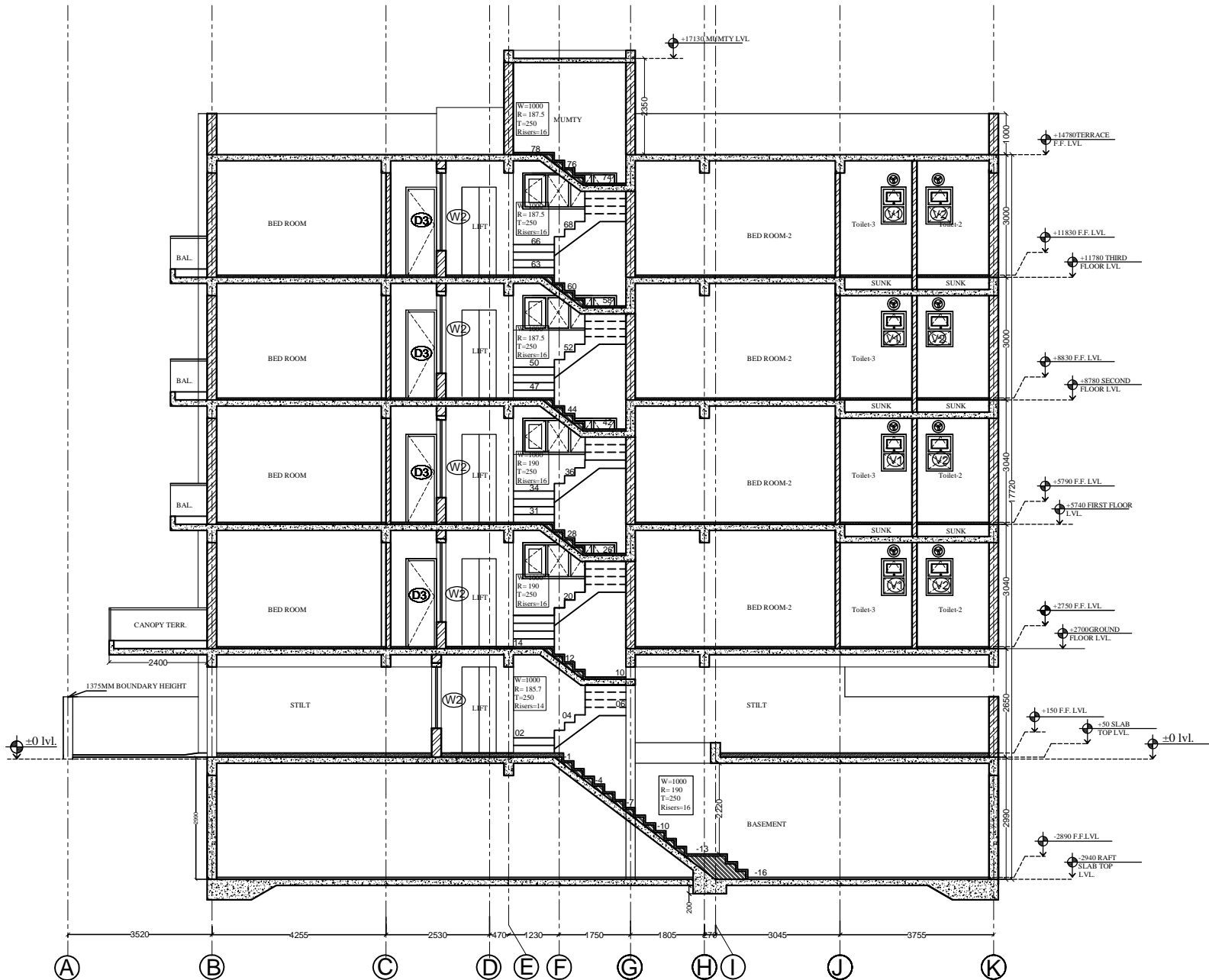
Proposed Residential Project for
The O.I.C Ltd. at Plot No E-409 , G.K.

VASTU MANDAL
Architects, Engineers & Interior Designers
F-328, Lado Sarai, Old M.B Road, N.D- 30
Ph. 41665455, E-mail- vastumandal@gmail.com

Date : 02.05.16

Drawn By: Pooja Rawat

DRG.: A./ t.F.P./-06



Section - BB

THIS DRAWING IS THE PROPERTY OF M.S. VASTU MANDAL
AND IS NOT TO BE USED FOR ANY PURPOSE OTHER THAN
WHICH IT IS ISSUED.
THIS DRAWING IS NOT TO BE REPRODUCED TRACED OR
COPIED WITHOUT THE PRIOR PERMISSION OF THE
ARCHITECT.
ALL DIMENSIONS MUST BE VERIFIED AT THE SITE BEFORE
THE COMMENCEMENT OF THE WORK.
ALL WRITTEN DIMENSIONS ARE TO BE FOLLOWED AND
THE DRAWING IS NOT TO BE SCALED.
ANY DISCREPANCIES FOUND IN THE DRAWING SHALL BE
BROUGHT TO THE NOTICE OF THE ARCHITECT IMMEDIATELY.
THE SOLE COPYRIGHT FOR THIS PLAN LIES WITH
VASTU MANDAL ARCHITECTS
MISUSE OF THIS DRAWING OR COPYRIGHT INFRINGEMENT
IS LIABLE FOR STRICT LEGAL ACTION.

REVISION

S.No.	R.No.	Date	Revisions	Issued
1.		02.05.16		V.B.Mita
2.	R-01	27.07.16	Basement Staircase Width Modified	V.B.Mita
3.		09.03.17		V.B.Mita

Drawing Title:

SECTION -BB

Project:

Proposed Residential Project for
The O.I.C Ltd. at Plot No E-409 , G.K-

VASTU MANDAL
Architects, Engineers & Interior Designers
F-328, Lado Sarai, Old M.B. Road, N.D.-30
Ph. 41665455, E-mail- vastumandal@gmail.com

Date :
27.05.16

Drawn By:
Pooja Rawat



DRG.:
A./ Sec.Drg./-0/.